

SPECIFICATIONS

- Constructed using AISI 304 or 316 wire cloth
- Fully electro-welded inner tube
- Available with STAINLESS STEEL or POLYPROPYLENE fittings
- Degree of filtration from 5 to 1000 microns
- Length from 4" to 40" nominal
- Outer diameter < 68 mm
- Flow direction: Ext. → Int.
- **Special designs on request**

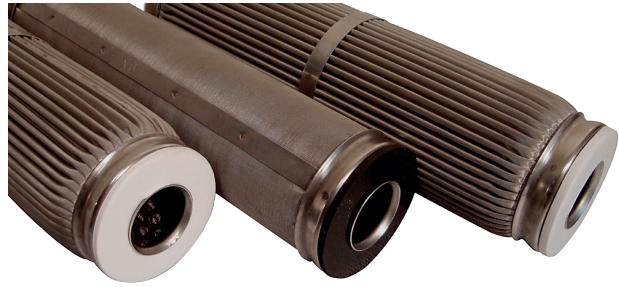
APPLICATIONS

- Fuels and lubricant filtration
- Filtration of liquids even with high viscosity
- Filtration of gases even at high temperatures
- Potable and process water filtration
- Detergent filtration
- Beverage and syrup filtration
- Critical solvent and fluid filtration

Max. operating conditions

- Max. differential pressure:
 - Pleated Glued Øo 58: 15 bar @ 25°C
 - Pleated Glued Øo 68: 8 bar @ 25°C
 - Pleated stapled Øo 68: 8 bar @ 25°C
 - Cylindrical Glued Øo 58: 5 bar @ 25°C
 - Cylindrical Glued Øo 68: 3 bar @ 25°C
 - Cylindrical Stapled Øo 58: 5 bar @ 25°C
 - Cylindrical Stapled Øo 68: 3 bar @ 25°C
- Max. operating temperature*:
 - 160°C: version "E" with epoxy adhesive
 - 200°C: version "K" brazed
 - 250°C: version "G" stapled
 - 360°C: version "S" TIG-welded

*Compatible with maximum gasket temperatures



Filtration	Indicative flow rate for water*	Filtering surface area cm ²					
		µm	l/h	H	A-CL	B-CL	CP
5	700						
10	1000						
15	1500						
25	1800						
40	2500			10"	470	540	1700
50	2500						
70	3000			20"	950	1100	3400
100	3000						
150	3500						
200	3500			30"	1400	1600	5100
250	3500						
300	3500			40"	1900	2160	6800
400	3500						
500	3500						
750	3500						
1000	3500						

* Flow rate refers to a 10" 'CP' cartridge - Δp 0.1 bar

COMPOSITION CODE	MM	A	CP	1	D	G	M1	10	1	P	N	M
	Mod	Ø Out	Type	Micron**	Filter Mesh Support	Sealant Type	Filter Media Material	Height***	End cap	End Materials	Gaskets	Spring
		A = Ø OUTER 58 mm	CL Cylindrical	5 10 15 25 40 50 70 100 150 200 250 300 400 500 750 1000	N = Normal	E = Epoxy adhesive	M1 = AISI 304	6 = 6" (152 mm)	0 = DOE 1 = DOE with gasket	P = Polypropylene	0 = None	- = None MI = Internal Reinforcement Spring
		B = Ø OUTER 68 mm	CP Pleated		D = Double Support	G = Stapled	M2 = AISI 316	10 = 10" (250 mm)	3 = SOE -222 with blind bottom	S1 = AISI 304	N = Nbr	ME = External Reinforcement Spring
						S = TIG Welded		20 = 20" (500 mm)	6 = SOE -226 with blind bottom	S2 = AISI 316	E = Epdm	MIE = Internal and External Reinforcement Spring
						F = Replaceable sleeve		30 = 30" (750 mm)	7 = SOE -226 with tip		V = Viton	LE = External Plate
						K = Brazed		40 = 40" (1000 mm)	8 = SOE -222 with tip		T = Ptfе	
									9 = SOE -225 with tip		P = PVC	

** Other filtrations available on request

*** Other heights available on request